

SAB

MADE IN ITALY

Nobel



Automatic coffee and hot water

Stainless steel bodywork

Stainless steel steam arm and water wand

3 litre internal water tank with direct plumbing option

Thermosiphon/Heat Exchange system

Warning notification for low level water indicator in boiler

Copper boiler

Available in chrome, red & black

W x D x H (mm)

Boiler

Weight

Watt

Voltage

Power

300 x 400 x 430

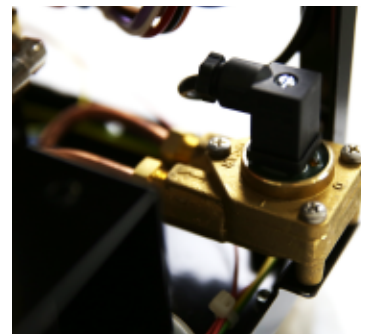
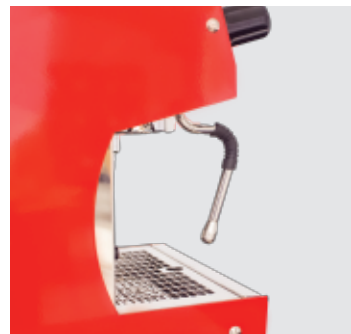
2.5L

27kg

1100

240

10amp



SAB
MADE IN ITALY

www.sabcoffeemachines.com